

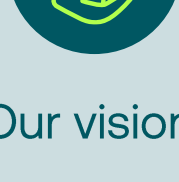
We're empowering switched on customers, generators, and partners to get to net zero.

We're asset-light, operating without bias. Our reliable, innovative retail solutions for clean energy suit different needs and stages of the sustainability journey.

Empowering a renewable future.

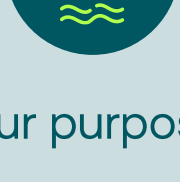
We know the journey to 100% renewable energy is complex because everyone is at different stages with unique needs. With the grid mix changing, balancing supply and demand has never been more important. That's why our business model is flexible, our advice is unbiased, and our innovative retail solutions are realistic. Supporting the clean energy transition, by managing complex and intermittent generation sources, is our passion and what we do best.

With offices in Australia, the UK, and the US, we've been shaping the global energy landscape since 2001. We're a stable, well-resourced renewable energy company, backed by our parent company, the Marubeni Corporation.



Our vision

To lead the way towards a 100% renewable energy system, creating a better future for all.



Our purpose

To empower, educate and enable everyone to make greener energy choices and transition to net zero.



Our values

Think customer. One team, one future. Innovate to accelerate. Own it.



Commercial and Industrial (C&I)

794

GWh

Delivered Volume
CY2023

1,200

GWh

Delivered Volume
CY2024

+51

%

Delivered Volume Growth
CY 2023-2024

~2,300

NMIs* Supplied
as of 1/2/2024

*NMI stands for National Meter Identifier. It is a unique identifier used primarily in Australia to identify every electricity metering point. It enables energy retailers, network service providers, and market operators to accurately track, manage, and bill electricity consumption or production at every metering point.

719.2 GWh

Renewable Energy Supplied
Including GreenPower

347.8 GWh

Contracted Renewable Energy
Capacity

597

Customers (Generation & Supply)



Total FTE in Australia:

69

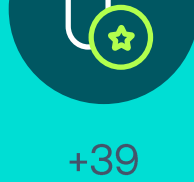
Retail Licenses:

Australian Financial Services License (AFSL)

Essential Services Commission (ESC)

Australian Energy Regulator (AER)

Customer satisfaction



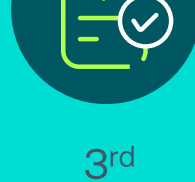
+39

Net Promoter Score
Customers
2024



+52

Net Promoter Score
Brokers/TPIs
2024



3rd

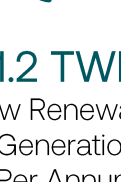
Invoices Are Issued
Around the 3rd of
Each Month

Generation

Providing Australian independent generators with a competitive route to market and access to flexible services



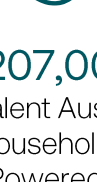
764 MW
of Capacity
Contracted
Under PPA



1.2 TWh
New Renewable
Generation
Per Annum



7 PPAs
Large-Scale
Developments
With Independent
Renewable Generators

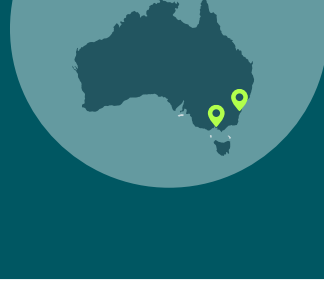


~207,000
Equivalent Australian
Households
Powered*

*Based on our expected annual volume, we will be powering a vast number of businesses, which if equated to something we can all relate to – our homes – means we'd be able to power a large number of households!

Our global reach

Australia,
Sydney and Melbourne



United Kingdom,
London, Ipswich, Worthing and
Manchester



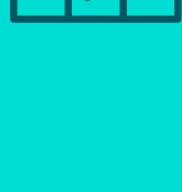
Syracuse,
New York



Battery Energy Storage System (BESS) Calala

Entered into the first large-scale battery tolling agreement, developed by Equis.

- Capacity: 100 MW / 200 MWh
- Connection: Direct connection to the New South Wales transmission network via the 330kV Tamworth substation
- Technology: Using 138 units of Tesla Megapack XL2 batteries
- Schedule: Commercial operation scheduled to begin by 2027



Our memberships



Marubeni Group

No 298

Fortune Global 500
Companies List

50,200

Group employees working in 131
branches and offices worldwide

AU\$77.1bn

Revenue
(equivalent to US\$52.1bn)



+61 (0)2 8328 1212

help-aus@smartestenergy.com.au

[linkedin.com/company/smartestenergy](https://www.linkedin.com/company/smartestenergy)

www.smartestenergy.com